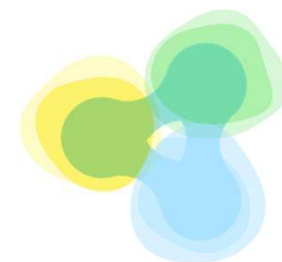


BEAUTIFUL

SUSTAINABLE

INCLUSIVE

NEW EUROPEAN BAUHAUS




New European Bauhaus
beautiful | sustainable | together



WHAT IS NEB?

In other words Bauhaus is:

- **integration** of sustainability, inclusivity and aesthetics into all facets of development
- **process of development** that is participatory, transdisciplinary, and multilevel
- commitment to improving **quality of life** of people
- enabler for the **green transition** of our societies and economy



The New European Bauhaus is a creative and **interdisciplinary** initiative that connects the European Green Deal to our living spaces and experiences

Why NEB?

The investments incorporating NEB values and principles will potentially:

- boost innovation
- increase the quality of life of people
- maximize project's benefits to the society
- increase the value of the real estate
- increase economy of scale for product and service groups
- increase the appeal and prestige of the area
- demonstrates the additional added value of both the EU and national financing

Embracing NEB projects now will help the managing authority to better prepare for future programming periods when addressing social and (especially) environmental concerns might be a more serious requirement



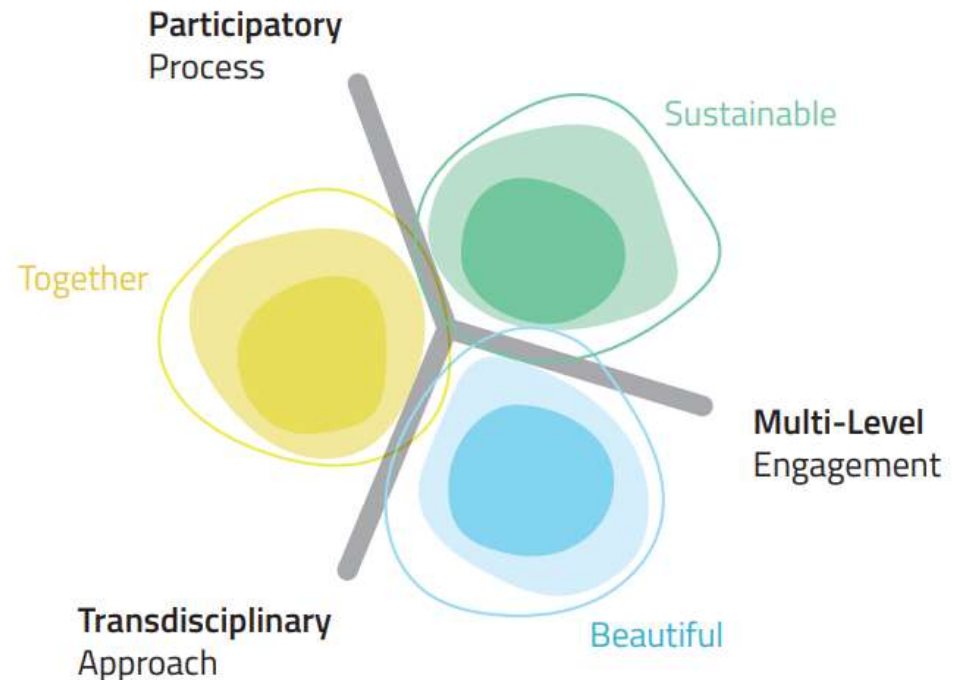
These ideas are reflected in **3 core values**, shared by NEB projects and initiatives:

- 1) Sustainability
- 2) Quality of experience (aesthetics, cultural and emotional benefits)
- 3) Inclusion

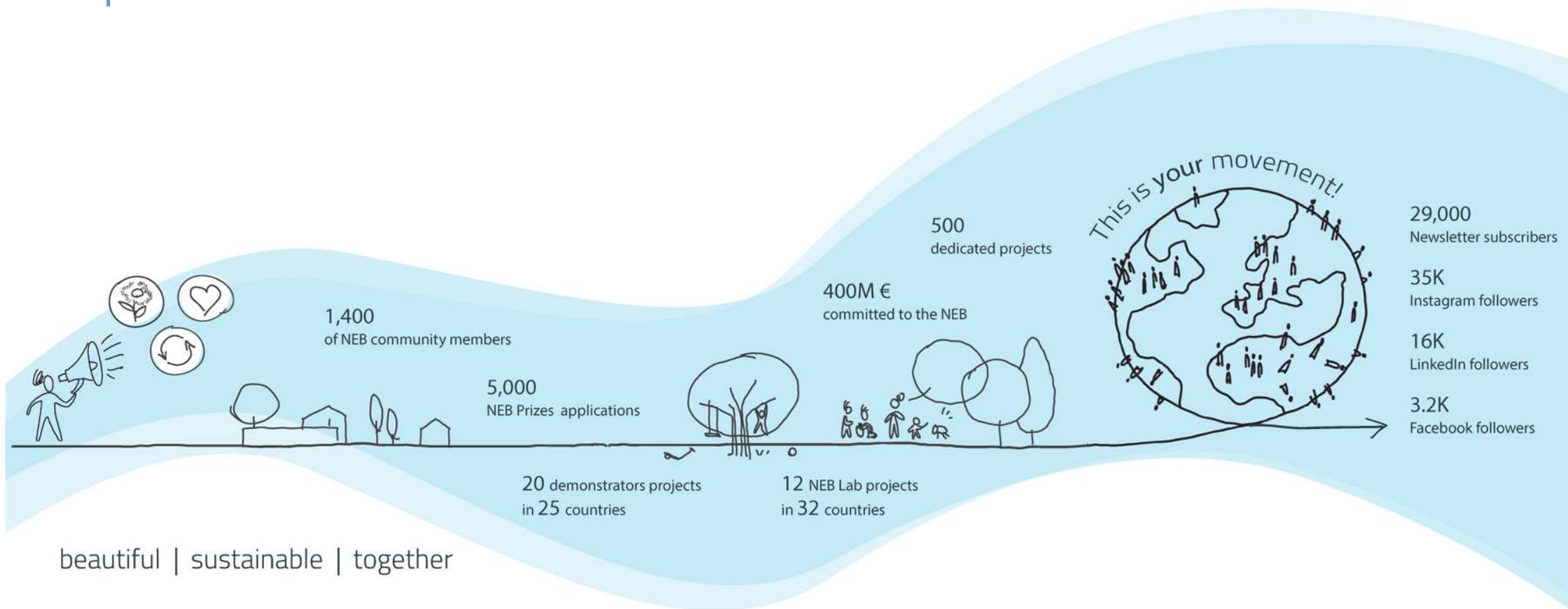
And **3 working principles** in the conception of NEB projects and initiatives:

- 1) Participatory process
- 2) Transdisciplinary approach
- 3) Multi-level engagement

What defines NEB project?



NEB initiative

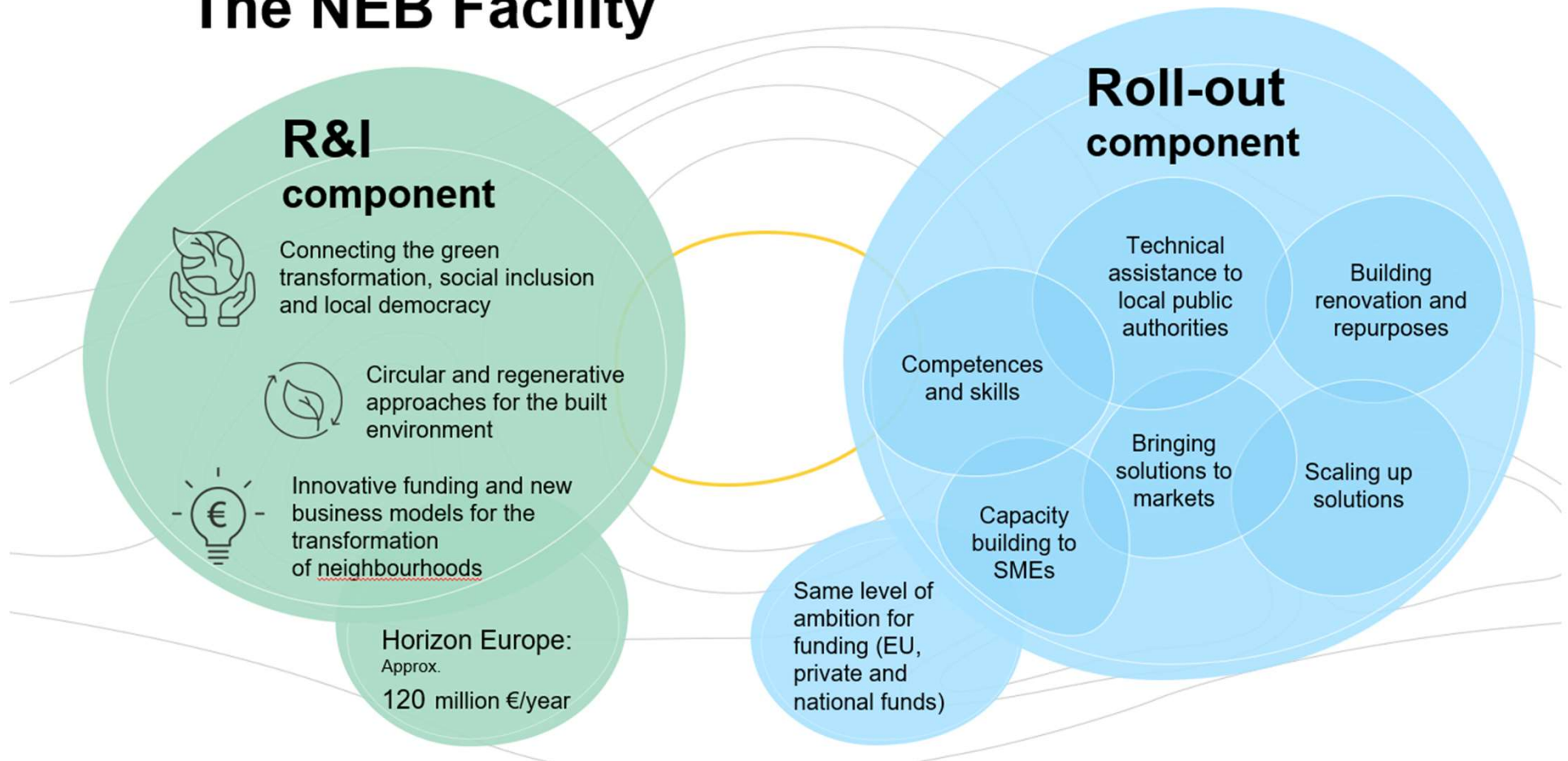


NEB Facility: Background

Funding awarded and to be awarded in 2021-2024 (in million EUR)		
	Funding	Percentage
Horizon Europe	163.8	41.0
Cohesion policy (2021-2027)	217.3	54.4
LIFE	13.9	3.5
Digital Europe	1.0	0.3
Single Market Programme	2.2	0.6
COSME	1.0	0.3
TOTAL	399.3	100.0

Aim to revitalise neighbourhoods: 2025-2027

The NEB Facility



Cohesion policy support to NEB

Actions to support mainstreaming

Technical support provided to 20 municipalities to prepare projects

Call for Innovative Actions of the European Urban Initiative – EUR 65 Million to implement 14 projects in 14 municipalities

‘NEB territorial development model’ – model of financial instrument

‘NEB in regions and cities’ event in June 2023

Experts, toolbox, work with monitoring committees and managing authorities

Community of Practice (**in preparation**)

In parallel: NEB Prizes (2021, 2022, 2023, 2024, **2025**)



New European Bauhaus Prizes 2025

- Call for applications to open in Q4 2024 – stay tuned!
- New in the NEB Prizes 2025:

Prizes to Small Municipalities

- ➔ *To support small grassroots NEB projects developed in, by and with local communities*
- ➔ *More information to be announced alongside the launch of the NEB Prizes 2025*

NEB tools at your disposal



- NEB Compass
- Support to New European Bauhaus Local Initiatives
- Self-Assessment Tool
- EIB Investment Guidelines



Technical assistance – NEB Toolbox

European Urban Initiative 2021-2027

ERDF-CF Regulation - Article 12

Overall objectives

- Strengthen integrated and participatory approach to sustainable urban development
- Provide stronger link to EU policies, in particular to Cohesion Policy
- **Ambition:** provide more coherent support to cities by interconnecting manifold initiatives, tools and instruments in support of cities under Cohesion Policy

Beneficiaries

- **Support to cities of all sizes** including small & medium-sized and large cities, functional urban areas; shall support Urban Agenda for the EU; upon request of Member States, support for inter-governmental cooperation on urban matters

Two strands for activities:

A. Support of Innovative Actions

B. Support of Capacity and Knowledge Building, Territorial Impact Assessments, Policy Development and Communication

**ERDF budget:
EUR 395 million***

** Reduction of EUR 55 million following MFF review*



Strand A – Innovative actions

Calls for Proposals

Call 1 (closed on January 2023)

Budget: € 65 million (ERDF)

Topic: New European Bauhaus

14 projects selected

Call 2 (closed on October 2023)

Budget: € 120 million (ERDF)

Topics:

- Greening cities
- Sustainable tourism
- Harnessing talent in shrinking cities

22 projects

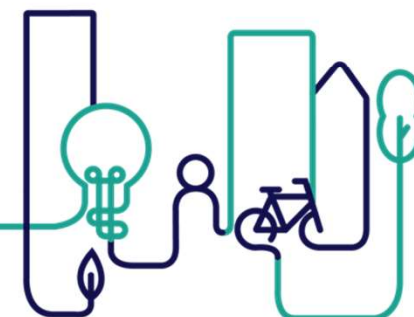
selected

Call 3 (**open** till October 2024)

Budget: € 90 million (ERDF)

Topics:

- Energy Transition
- Technology in cities



Strand B – Capacity building

City2city exchanges

All EU cities of all sizes

Exchanges with other cities through on-site visits for peer-learning and replication

Call open until 17th of November

Peer reviews

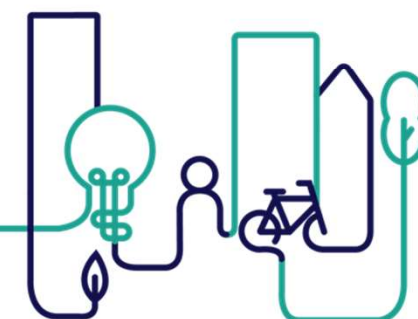
EU cities preparing or implementing integrated urban strategies with Cohesion Policy support

Strategies are reviewed by other strategies with JRC methodology

Events

Cities, managing authorities, stakeholders get together to tackle together common challenges and build a community of practitioners.

Three activities



Capacity building



Urban Contact Points

The EUI relies on a network of Urban Contact Points (UCPs) in Member States, to provide a coherent and integrated approach to knowledge sharing, capacity building, communication and dissemination on sustainable urban development between the EU and national, regional, and local levels.

Operating in each country's national language, UCPs aim at providing information, matching needs and communicating and disseminating EUI activities and knowledge outputs to urban policymakers and practitioners at local, regional and national levels. They also act as an information and knowledge sharing nexus between the actors at national, regional and local levels and the EUI.

[Contact point in Latvia is in VARAM](#)

Additional opportunities for capacity building

- **TAIEX-REGIO Peer2Peer** helps organise **short-term exchanges** with one or more **peers from other EU countries** to meet specific learning needs. These exchanges can be organised as either **one-off meetings** or a **series of events**. They help staff from eligible bodies get answers to their questions on thematic aspects of the EU Regional and Urban Policy or on cross-cutting issues related to the management and control of the programmes.
- The **REGIO Peer2Peer Communities** offer a platform to develop a **longer-term dialogue** with peers from several EU countries on topics of common interest to allow for **in-depth analysis** and **co-creation**.
- While **TAIEX-REGIO** focuses on **exchanging existing knowledge** in good time and on demand, the **Communities** facilitate more in-depth discussions and aim to build **new knowledge** and develop **new approaches and tools**.





Sources to use

[The New European Bauhaus Compass](#)

[NEB Toolbox](#)

[NEB Prizes](#)

[NEB Investment guidelines](#)

[Self-Assessment Tool](#)

[Dedicated www page](#) + newsletter

[NEB territorial development model](#)

[Contact point in Latvia for European Urban Initiative](#)

[Capacity building for cities | EUI \(urban-initiative.eu\)](#)